

JClass ServerReport

Overflow Example

Embed instances of an image at a variety of sizes.

Printed: Fri Mar 12 10:33:17 PST 2010

First, embed the image at its natural size, which should fit easily into this frame.



Now, embed the image at a size that is too big for this frame. Using the default Overflow Rules, ServerReport will shrink the image (maintaining aspect ratio) and place the image on a page of its own and continue the document on the page following the image.



The placement of the overflowed image can be modified by changing the default Overflow Rules. In this case, the Placement and NextItemPlacement properties of the document's Overflow Rules have been set so that the overflowed image will be placed directly below this paragraph and so that the document will continue directly following the image. (If the image extends to the bottom of the page, the document will continue on the following page.)



The document continues here.



The document continues here.

In this case, the threshold will not have been passed when the image is embedded, so the overflowed image will appear on the current page.



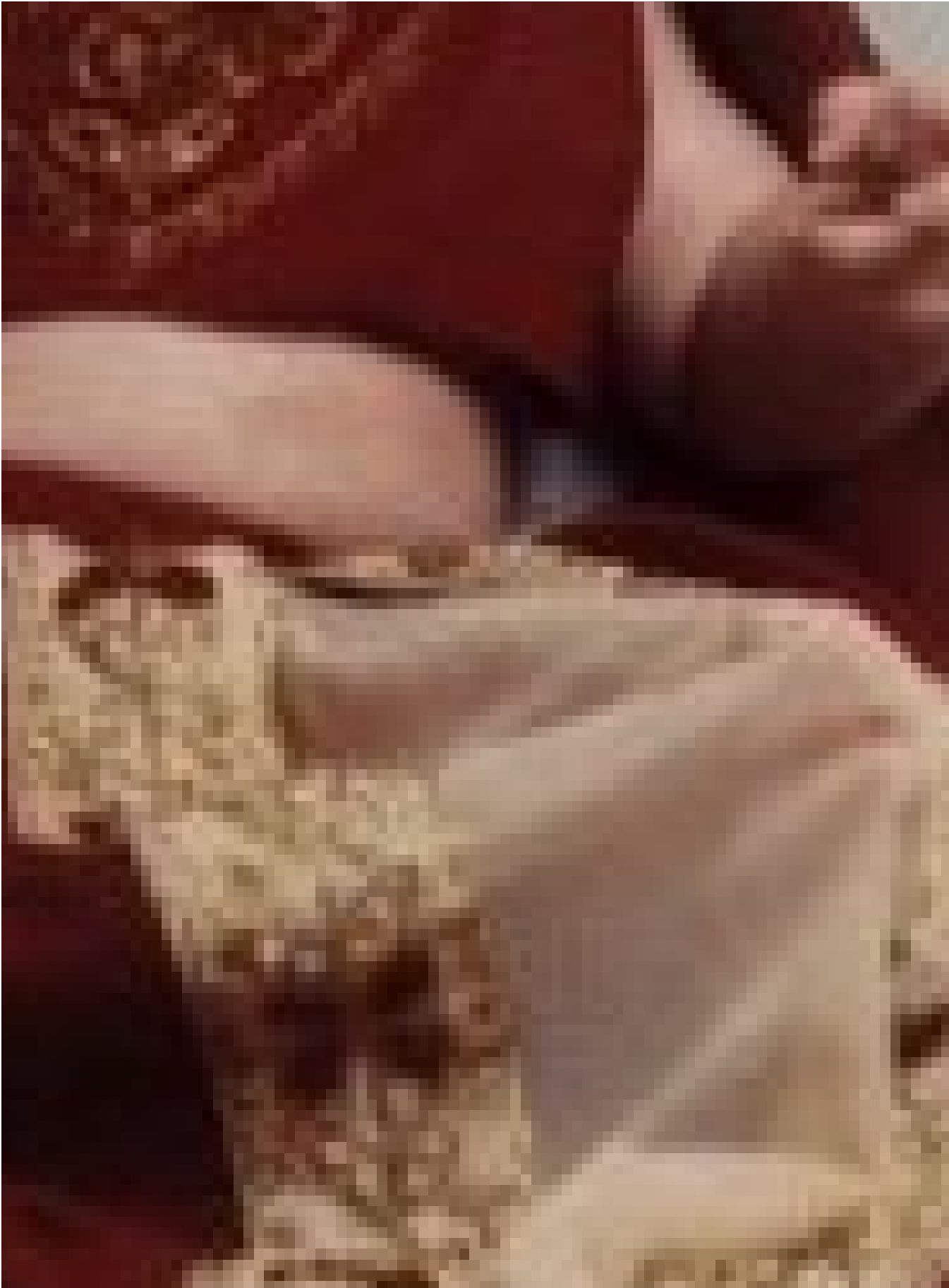
The method used to render the overflowed image may also be set by changing the default Overflow Rules. In this case, the Method property of the document's Overflow Rules has been set so that the overflowed image will be drawn at its embedded size over multiple pages.

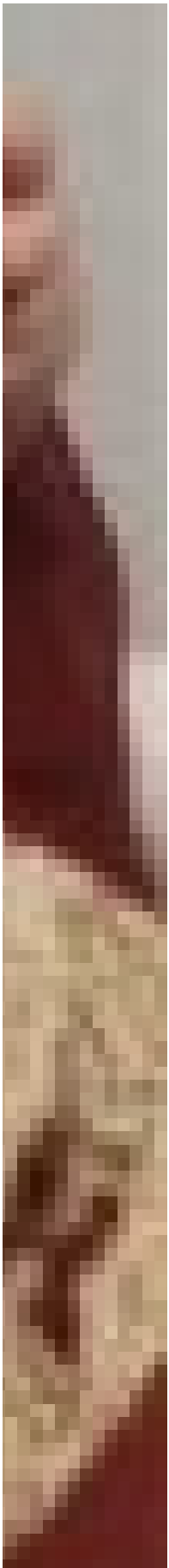


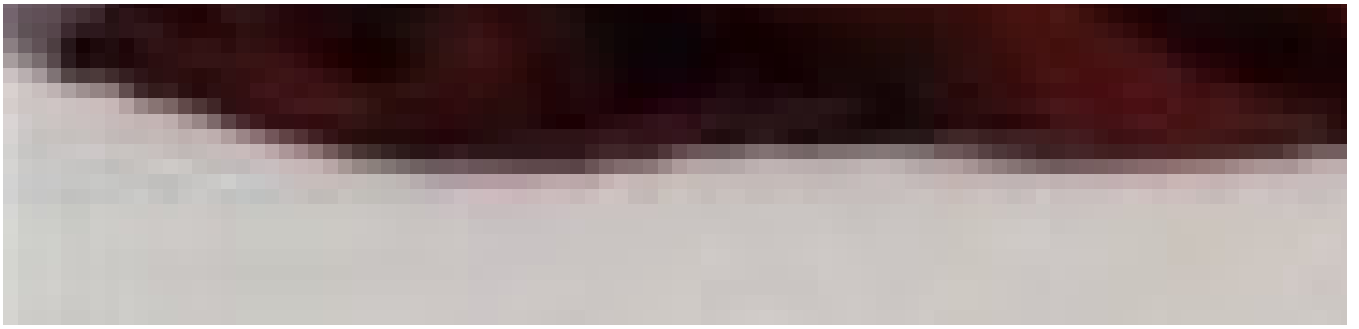
















The document continues here ... and ends.
